

AD ELEVATION
399FT

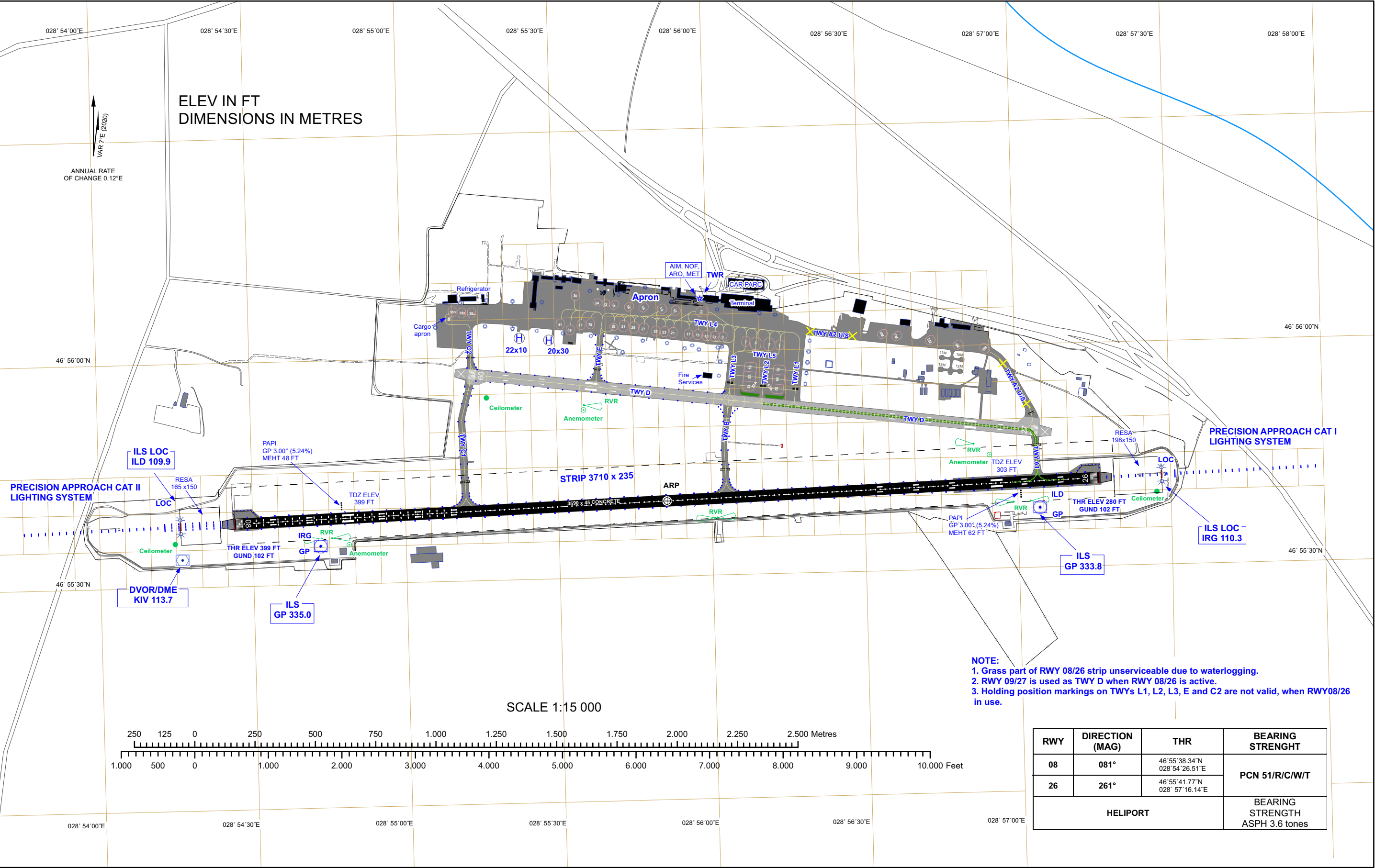
TOWER: 118.100 MHz
GROUND: 121.800 MHz
APRON: 131.700 MHz

AERODROME CHART - ICAO

ARP: 46°55'40"N
028°55'51"E

CHISINAU / LUKK
RWY 08/26

Changes: Guard Lights Indication on TWY A2, L1, L3, E, C2 Deleted and on TWY A1, B, C1 Added.



PAGE INTENTIONALLY LEFT BLANK